



TECHNICAL SPECIFICATIONS

Length	840 mm
Width	665 mm
Height	370 mm
Weight	28 kg
Draft	120 mm
Design capacity	12 m ³ /h
Capacity, certified ASTM	19,6 m ³ /h
Capacity, certified max	45,4 m ³ /h
Free water collected	2 - 6 %
Hydraulic flow	1-3 l/min
Hydraulic pressure	60-100 bar
Power requirement	0.1-0.5 kW



The Lamor Minimax 12 W/S design has been based on many years experience supplying high capacity oil recovery equipment.

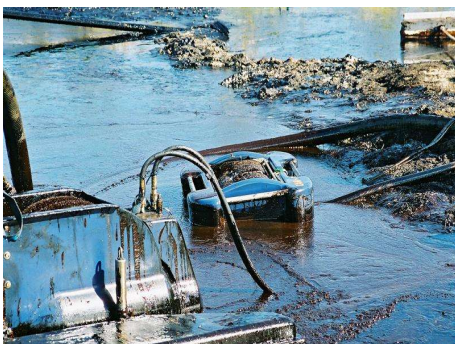
The MM 12 W/S is a light, portable suction type oil skimmer, designed to recover oil from shore line, harbors, estuaries, rivers and lakes. The MM 12 W/S uses the well proven Lamor brush wheel system, which combines high oil recovery capacity with a low free water pick-up rate.

The MM 12 W/S, weighing only 28 kg (62 lbs), is a hand portable skimmer with a nominal recovery rate of up to 19,6 m³/h (123.3 bbl/h) (ASTM F 631-99). The certified maximum capacity in ideal conditions is 45,4 m³/h (285.6 bbl/h). The Lamor brush wheels will recover any floating oils which remain fluid.



The MM 12 W/S comprises a floating skimmer head incorporating two brush wheel units side by side with a diameter of 250 mm (9.8"). The brush wheels rotate "with the flow", forcing the oil under the water. The oil tends to go up on the surface and at the same time sticks to the oleophilic brushes. The brush wheels consist of hundreds of thousands of bristles, giving a larger surface area for the oil to stick to than any other mechanical skimmers available. As the brush wheels rotate, water flows off the brushes through a channel and out of the skimmer head. Collected oil is scraped off into the oil collection hopper and pumped to a recovery tank.

The MM 12 W/S is entirely hydraulic and is normally supplied complete with a Lamor diesel powered hydraulic power pack and all necessary ancillary equipment. The unit should be connected to an effective suction pump or vacuum system. Optionally the power pack can be either electrically, gasoline or diesel driven.



The MM 12 W/S has proven its efficiency in continuous recovery operations during hundreds of oil spills, in all conditions and encountering all types of spilled oil and is certified by Bureau Veritas.

Standard connectors: Hydraulic TEMA 2510/2520,
Oil Discharge Camlock 2 1/2"
Hydraulic motor OMM 50

