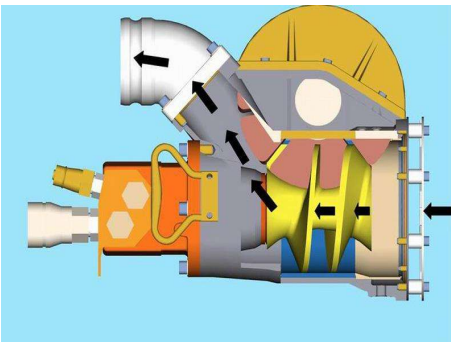




TECHNICAL SPECIFICATIONS

Length	400 mm
Width	250 mm
Height	500 mm
Weight	47 kg
Pump capacity	70 m ³ /hr
Discharge pressure	12 bar
Hydraulic flow	92 max l/min
Hydraulic pressure	210 max bar
Power requirement	32 max kW

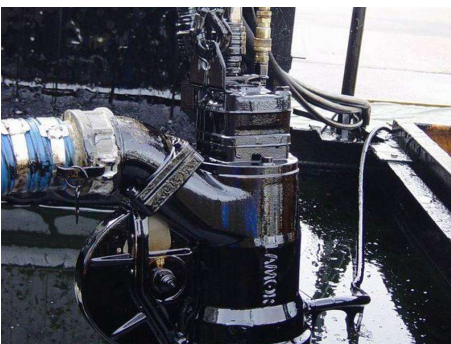


The Lamor GT A 70 pump is a multi purpose submersible Archimedes screw pump with a pumping capacity of 70 m³/h. This pump has been designed for use in skimmers and transfer or offloading pump applications and is able to pump a wide range of liquids ranging from water to the heaviest debris-laden viscous oils. The GT A 70 pump can deliver a maximum of 12 bar outlet pressure, benefits from water/steam annular injection on the inlet as standard and debris cutting knife to handle solids such as seaweed, plastics and ropes.

The GT A pump range is constructed from robust seawater resistant aluminum for the casings and stainless, acid proof steel internals with special seals that ensure the pump remains "dry". This hydraulically driven, positive displacement pump with low screw speed avoids further emulsification of the recovered product thus making further separation more efficient.



The special internal geometry of the GT A design ensures a gentle pumping action that will not emulsify oily water, and ensures the efficient movement of material through the unit. The pump can also handle solids up to 30 mm in diameter, should the pump become clogged, it can be reversed to expel the blockage. The GT A's range of impressive features makes it well-suited to many applications, including for use as a transfer pump in oil recovery skimmers, for emergency pumping of heavy crude, bunker oil, or bitumen, for tank cleaning, pipeline maintenance, and for sludge removal from waste oil pits.



The GT A pump range has been extensively tested in the field and has received accreditation from Bureau Veritas confirming their recovery capacities in oils of varying viscosities.

Minimum manhole diameter: 400 mm

Standard hydraulic couplings:
 Pressure 3/4" TEMA (or Aeroquip), female
 Return 1" TEMA (or Aeroquip), male
 Drain 3/8" TEMA (or Aeroquip), male
 Hydraulic motor OMSS 80

Standard discharge outlet: 4" Camlock, male

