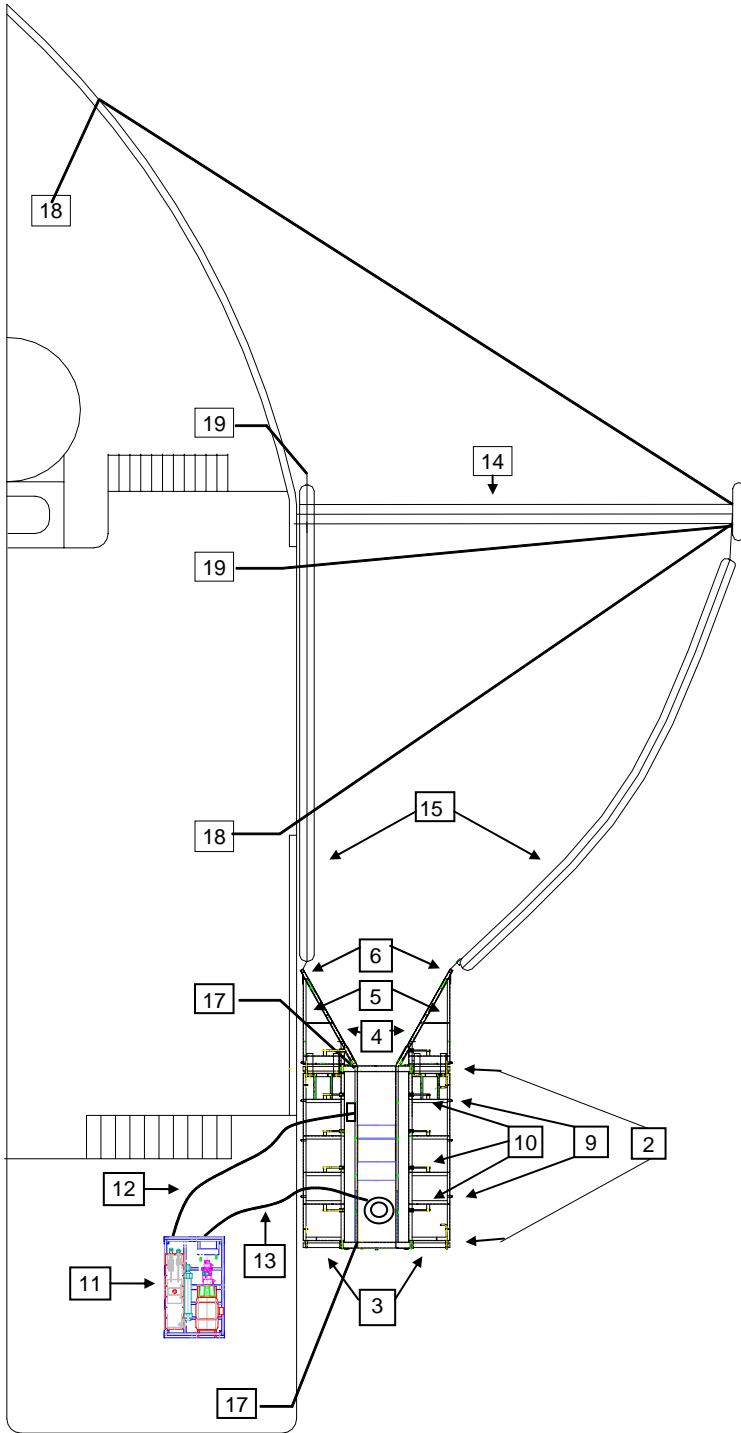


JBF DIP 600 OPERATOR CARD

DEPLOYING THE SKIMMER



1. Remove the top of the skimmer and unpack any items which may have been stowed in the compartment.
2. Install strong backs in the fore and aft channels.
3. Lift the port and starboard wings into position and lock in place by sliding the aft pins into the holes at the end of the strong back.
4. Swing the solid sweep faces out from under the wings and forward. **CAUTION:** Do not open past 30 degrees.
5. Unfold the triangular wing section at the front of the skimmer and lock into place by sliding the locking pins forward, through the strong back and the forward wing section.
6. Using the long stainless steel bolts, connect the triangular wing to the ends of the rigid sweep.
7. Inflate the pontoons to a **maximum** of 2.5 psi.
8. Attach the float saddles to the pontoons using four nylon web straps per pontoon.
9. Line the top pin holes of the pontoon saddles with the large pins at the edge of the skimmer wings. Lock pins into place with the "click" pins attached to the skimmer.
10. Pin the short stiff arms at the back underside of the skimmer wings to the back of the pontoon saddles with the attached pins.
11. Locate the power pack in a position which allows the operator to see the skimmer when it is deployed. It is particularly important that the operator see the rear of the skimmer during skimming operations.
12. Connect the hydraulic hoses to the power pack and the belt drive motor.
13. Connect the hydraulic hoses to the power pack and the pump. **CAUTION:** Be sure to properly connect the case drain hose to the pump and power pack.
14. Assemble outrigger arm on deck. Assemble parallel to the vessel side with the float facing aft. Connect the goose to the yoke on the vessel side. Attach the fore and aft guy lines. Run the outboard sweep haul line through the pulley. Deploy the outrigger to its 90 degree position.
15. Inflate oil containment boom. Connect to the skimmer and tow bridles. Connect out haul lines to the tow bridles. **WARNING:** Insure the locking pins are installed in boom connector.
16. Lift the skimmer from the deck and deploy in the water along with the containment boom.
17. Secure skimmer to vessel with the mooring lines
18. Secure the outrigger arm in place with the fore and aft guy lines.
19. Pull the outboard and inboard oil containment boom out to the end of the outrigger arm using the haul lines.

REFER TO THE OPERATORS MANUAL FOR COMPLETE INSTRUCTIONS